

# ADVANTAGE LINE - Low Profile



## HI HPLP Low Profile Load Points

The Hardy HI HPLP ADVANTAGE® Series are low profile load point systems designed to support loads where a traditional load cell won't fit. They are designed with electro-polished surfaces, and stainless steel or alloy steel construction making them low-maintenance in less than ideal environments.



- Stainless steel construction with electro-polished finish or alloy steel with (1.0443) plating
- Environmental Protection IP68/IP69
- Complete laser welded hermetic sealing
- Low profile design with integrated lift off protection
- Calibration in mV/V/Ω
- NTEP Class III
- Stainless mount features RA Rating of 0.5um nominal

### SPECIFICATIONS

Rated Output (ES)	2±0.1 mV/V
Non-Linearity	< ±0.25 % R.O.
Hysteresis	< ±0.25 % R.O.
Zero Balance	< ±5.0 % R.O.
Creep @ 30 Min.	< ±0.06 % R.O.
Temp Effect Output	< ±0.04 % R.O./C
Temp Effect Sensitivity	< ±0.02 % R.O./C
Input Resistance	366 ± 10 ohm
Output Resistance	351 ± 2ohm
Insulation Resistance	≥5000 Mohm
Excitation	5 - 15 vdc
Safe Load Limit	200 % Emax
Ultimate Load	300 % Emax
EN 60 529 Protection	IP68*/IP69
Operating Temperature	°C -20 to +65
Stainless RA Rating	0.5um nominal
Warranty	Two years

\* Up to 2m water depth

The weigh module provides users with a uniform, compact and economical solution across a wide range of load cell capacities - from 500 kg (1100 lbs.) through to 30,000 kg (66,000 lbs.). Each load point consists of mounting hardware and a mV/V and mV/V/ohm matched load sensor with true hermetic sealing, C2® Electronic Calibration capabilities, on-board electronic certs and twenty feet of cable. Each load point assembly is specifically designed to eliminate the effects of unwanted side forces to provide exceptional accuracy and features IP68/IP69.

### ORDERING INFORMATION

Load sensor is available in Stainless Steel. Load point consists of sensor and mount and is available in stainless steel (SS) or alloy steel (AS).

Load Sensor		Model #	Load Point	
lbs	mt	Sensor Only	Stainless Steel Mount	Alloy Steel Mount
1.1K	.5 mt	HIHP50-SS-1.1K	HIHPLP-SS-1.1K	HIHPLP-AS-1.1K
2.2K	1 mt	HIHP50-SS-2.2K	HIHPLP-SS-2.2K	HIHPLP-AS-2.2K
4.4K	2 mt	HIHP50-SS-4.4K	HIHPLP-SS-4.4K	HIHPLP-AS-4.4K
11K	5 mt	HIHP50-SS-11K	HIHPLP-SS-11K	HIHPLP-AS-11K
22K	10 mt	HIHP50-SS-22K	HIHPLP-SS-22K	HIHPLP-AS-22K
44K	20 mt	HIHP50-SS-44K	HIHPLP-SS-44K	HIHPLP-AS-44K
66K	30 mt	HIHP50-SS-66K	HIHPLP-SS-66K	HIHPLP-AS-66K

Use SS for Stainless Steel and AS for Alloy Steel.

3 POINT SYSTEMS				4 POINT SYSTEMS			
CAPACITY		MODEL#		CAPACITY		MODEL#	
lbs	mt	3 sensors and 3 mounts		lbs	mt	4 sensors and 4 mounts	
3.3K	1.5	HI3HPLP_S-3.3K		4.4 K	2	HI4HPLP_S-4.4K	
6.6 K	3	HI3HPLP_S-6.6K		8.8K	4	HI4HPLP_S-8.8K	
13.2 K	6	HI3HPLP_S-13.2K		17.6K	8	HI4HPLP_S-17.6K	
33K	15	HI3HPLP_S-33K		44K	20	HI4HPLP_S-44K	
66K	30	HI3HPLP_S-66K		88K	40	HI4HPLP_S-88K	
132 K	60	HI3HPLP_S-132K		176K	80	HI4HPLP_S-176K	
198K	90	HI3HPLP_S-198K		264K	120	HI4HPLP_S-264K	

All information and drawings on these pages are subject to change without notice. Consult website for latest specifications.

## ADVANTAGE Low Profile Load Sensor

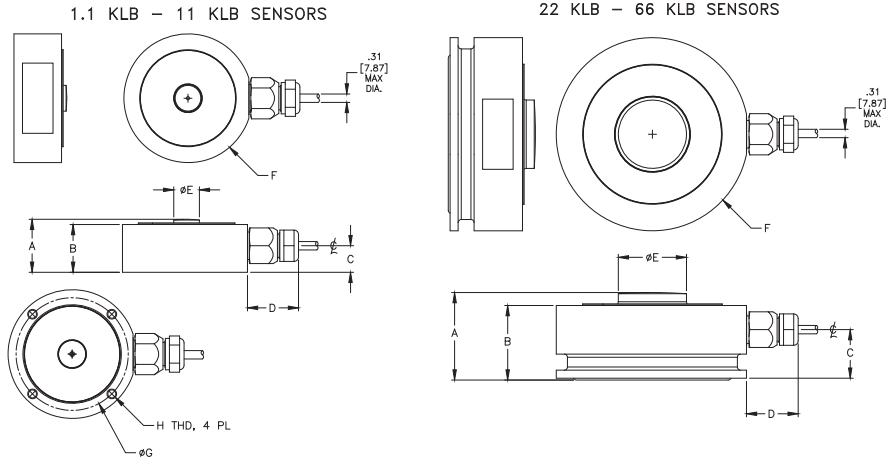
### HI HP50 Load Sensors

C2 WIRE COLOR CODE FLAG LABEL IS FOUND APPROX. 10 IN. FROM END OF SENSOR'S CABLE

EXCITATION +	RED
EXCITATION -	BLACK
SIGNAL +	GREEN
SIGNAL -	WHITE
C2 +	GRAY
C2 -	VIOLET
SHIELD	YELLOW

WARNING: NEVER cut load sensor cable

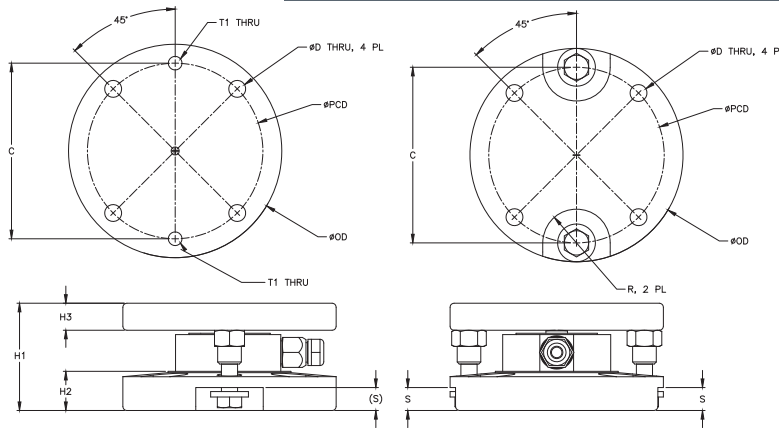
CABLE LENGTH: 20 FEET



MODEL NUMBER	CAPACITY LBS [MT]	A	B	C	D	ØE	ØF	ØG	H THD	WEIGHT	CABLE LENGTH FT [M]
HI HP50-SS-1.1K	1.1 KLB [0.5MT]	1.299 [33]	1.181 [30]	.649 [16.5]	1.201 [30.5]	.630 [16]	3.150 [80]	2.756 [70]	M6 X 8MM DEEP	1.76 LB [0.8KG]	20FT [6.1M]
HI HP50-SS-2.2K	2.2 KLB [1MT]	1.299 [33]	1.181 [30]	.649 [16.5]	1.201 [30.5]	.630 [16]	3.150 [80]	NA	NA	1.76 LB [0.8KG]	20FT [6.1M]
HI HP50-SS-4.4K	4.4 KLB [2MT]	1.299 [33]	1.181 [30]	.649 [16.5]	1.201 [30.5]	.630 [16]	3.150 [80]	NA	NA	1.76 LB [0.8KG]	20FT [6.1M]
HI HP50-SS-11K	11 KLB [5MT]	1.299 [33]	1.181 [30]	.649 [16.5]	1.201 [30.5]	.630 [16]	3.150 [80]	NA	NA	1.76 LB [0.8KG]	20FT [6.1M]
HI HP50-SS-22K	22 KLB [10MT]	1.614 [41]	1.398 [35.5]	.906 [23]	1.201 [30.5]	1.142 [29]	3.740 [95]	NA	NA	2.87 LB [1.3KG]	20FT [6.1M]
HI HP50-SS-44K	44 KLB [20MT]	2.126 [54]	1.831 [46.5]	1.240 [31.5]	1.201 [30.5]	1.673 [42.5]	4.724 [120]	NA	NA	6.61 LB [3KG]	30FT [9.1M]
HI HP50-SS-66K	66 KLB [30MT]	2.126 [54]	1.831 [46.5]	1.240 [31.5]	1.201 [30.5]	1.673 [42.5]	4.724 [120]	NA	NA	6.61 LB [3KG]	30FT [9.1M]

TOLERANCES: ±0.015 [0.4] UNLESS OTHERWISE STATED

## ADVANTAGE Low Profile Load Point Outline



DIMENSIONS- IN [MM]		TOLERANCES: ±0.015 [0.4] UNLESS OTHERWISE STATED									
CAPACITY LBS [MT]	ØPCD	ØOD	C	ØD	R	H1	H2	H3	S	T1 THD	
1.1 KLB [0.5MT]	5.12 [130]	6.22 [158]	5.12 [130]	.49 [12.5]	.98 [25]	3.13 [79.5]	1.14 [29]	.79 [20]	.67 [17]	M12	
2.2 KLB [1MT]	5.12 [130]	6.22 [158]	5.12 [130]	.49 [12.5]	.98 [25]	3.13 [79.5]	1.14 [29]	.79 [20]	.67 [17]	M12	
4.4 KLB [2MT]	5.12 [130]	6.22 [158]	5.12 [130]	.49 [12.5]	.98 [25]	3.13 [79.5]	1.14 [29]	.79 [20]	.67 [17]	M12	
11 KLB [5MT]	5.12 [130]	6.22 [158]	5.12 [130]	.49 [12.5]	.98 [25]	3.13 [79.5]	1.14 [29]	.79 [20]	.67 [17]	M12	
22 KLB [10MT]	5.75 [146]	7.40 [188]	5.75 [146]	.49 [12.5]	1.08 [27.5]	4.08 [103.5]	1.46 [37]	1.18 [30]	.79 [20]	M16	
44 KLB [20MT]	7.28 [185]	8.98 [228]	7.28 [185]	.65 [16.5]	1.38 [35]	4.88 [124]	1.65 [42]	1.28 [32.5]	.79 [20]	M16	
66 KLB [30MT]	7.28 [185]	8.98 [228]	7.28 [185]	.65 [16.5]	1.38 [35]	4.88 [124]	1.65 [42]	1.28 [32.5]	.79 [20]	M16	

### HI HPLP Load Points